

WS #2 - R

Wednesday, August 28, 2024

DS 002R, Fall 2024

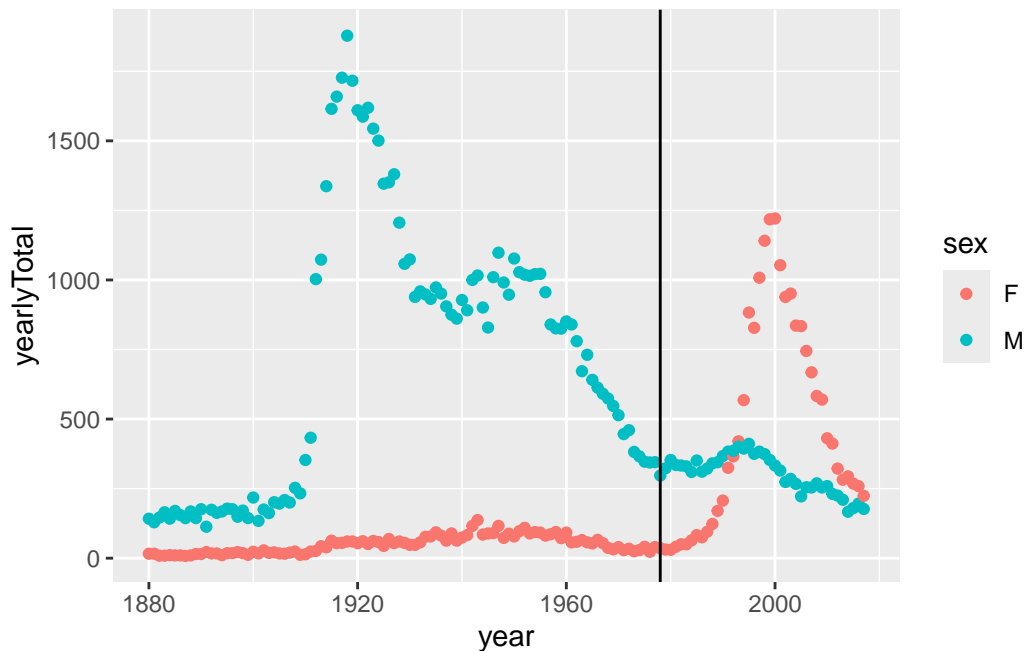
Your Name: _____

Names of people you worked with: _____

Tell your partner(s) the name of your hometown and how your classes are going. Is your schedule set or are you trying to move things around? Tell me your hometown (write it down) and whether or not you are set with your schedule.

Task:

Consider the following R code (you don't need to know the functions to solve the problem.)



```

Sidneys <- babynames |>
  dplyr::filter(name == "Sidney") |>
  dplyr::group_by(year, sex) |>
  dplyr::summarise(yearlyTotal = sum(n))

Sidneys |>
  ggplot2::ggplot(aes(x = year,
                      y = yearlyTotal)) +
  ggplot2::geom_point(aes(color = sex)) +
  ggplot2::geom_vline(xintercept = 1978)

```

The expressions above contain several types of objects as categorized here. Identify the object type for each of the items in the table. That is, assign one of a. through e. to each word.

- a. function
- b. data frame
- c. variable
- d. “named argument”
- e. level / value of the variable
- f. package

Item	Object Type	Item	Object Type
babynames		ggplot2	
name		n	
group_by		year	
sex		summarise	
yearlyTotal		sum	
dplyr		filter	
Sidneys		ggplot	
aes		x	
y		geom_point	
color		geom_vline	
xintercept		Sidney	

Solution:

Item	Object Type	Item	Object Type
<code>babynames</code>	b	<code>ggplot2</code>	f
<code>name</code>	c	<code>n</code>	c
<code>group_by</code>	a	<code>year</code>	c
<code>sex</code>	c	<code>summarize</code>	a
<code>yearlyTotal</code>	c	<code>sum</code>	a
<code>dplyr</code>	f	<code>filter</code>	a
<code>Sidneys</code>	b	<code>ggplot</code>	a
<code>aes</code>	a	<code>x</code>	d
<code>y</code>	d	<code>geom_point</code>	a
<code>color</code>	d	<code>geom_vline</code>	a
<code>xintercept</code>	d	<code>Sidney</code>	e